



# 380 MacNaughton Ave, Moncton, NB

11,000SF – Large Paved Yard



11,000 SF TOTAL

## Property Features & Benefits

Excellent Frontage on Busy MacNaughton Ave in Caledonia Industrial Park!

Easy access to the TransCanada Hwy, and just off Elmwood Drive.

Concrete block construction  
Natural gas heating

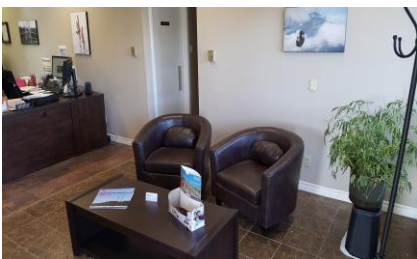
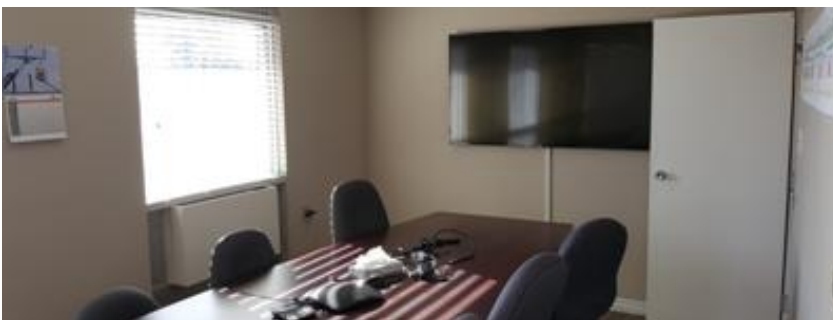
Multiple grade and dock level doors

1,500 SF Expandable Office space readily available

Large semi-paved yard(s) area with security fencing

22' Clear Ceilings for great storage capacity

Sprinkler system



### Why Choose Us?

- Flexible Leasing Options
- First Rate Customer Service
- Client Consulted Layouts
- Professional & Helpful Staff
- 24-7 Emergency Services
- Locally Owned & Operated
- Bilingual Service



Contact Cathy Sweet

(506) 869-0942

cathy@comztar.com

www.comztar.com



/comztar

/comztar

@comztar

**BROKER PROTECTED**