



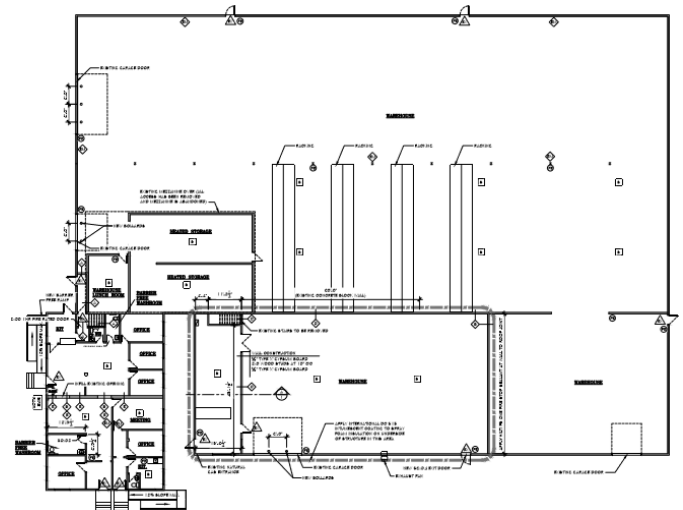
FOR LEASE - 47 Industrial St., Dieppe, NB

- Excellent Location soon to have a direct access Hwy 15.
- Full Sprinkler System.
- Natural gas heat in warehouse.
- Many dock and grade door options
- **2,000 – 2,400 – 4,487 – 6,487 – 8,847 Square Feet Options**
- Excellent Front Exposure



FOR SALE /FOR LEASE 161 Caledonia Rd, Moncton

- 10,000 – 32,800 sf available – prime warehouse office space
- Commercial / Industrial – Next to TCH – Highway visibility
- Dock and grade level doors
- Large Paved & Security Fenced Yard
- 24' Ceilings – 22' clear



FOR LEASE - 380 MacNaughton Ave., Moncton

- **5,000, 7,000, 11,000 sf with offices available**
- Natural Gas heating in warehouse. Sprinkler System
- Large semi-paved yard with security fencing
- 22 ft ceilings for great storage capacity
- 1-2 Dock and 1-2 Grade level doors available





**17 Somers, Moncton
12,950 to 16,000 sf Available**

- Prime location just off Elmwood Dr.
- Natural Gas Heating
- 2 dock level doors, 2 drive in doors
- 26ft to 30ft ceilings
- Sprinkler System
- Highway Visibility



**17 Somers, Moncton
9,240 sf Available**

- Excellent Frontage On Caledonia Rd.
- Natural Gas Heating
- 2 dock level doors, 2 drive in doors
- 26ft to 30ft ceilings
- Sprinkler System
- Highway Visibility On Back Of Bldg



**36 Urquhart, Moncton
14,244 sf available**

- Warehouse with Office Space
- Railway access
- Fenced in compound - 3 acres
- very large lot in prime Caledonia Industrial Park
- Easily subdivided into 2 units of approximately 7,000 sf
- Renovated 2014
- 3 Dock Doors – 2 Drive In Doors

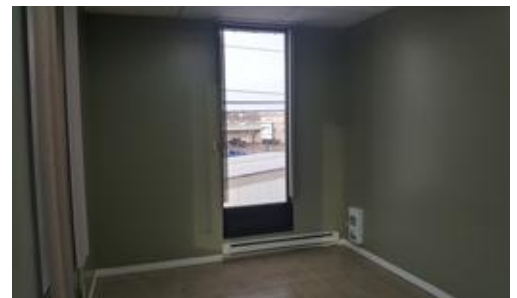


OFFICE SPACES FOR LEASE



**17 Somers, Moncton
1,525 to 3,050 sf Available**

- Office Space
- Ample parking
- Prime location within Caledonia Industrial Park



Why Choose Us?
Flexible Leasing Options
First Rate Customer Service
Client Consulted Layouts
Professional & Helpful Staff
24-7 Emergency Services
Locally Owned & Operated
Bilingual Service



Contact Cathy Sweet

(506) 869-0942

cathy@comztar.com
www.comztar.com

