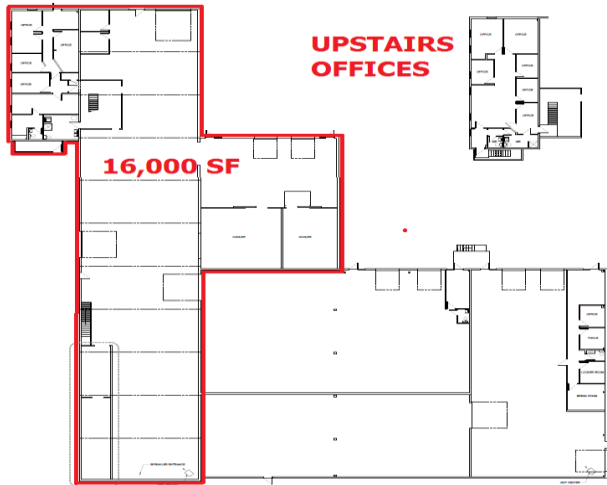




17 Somers Ave, Moncton, NB

16,000SF Available



5,000 - 16,000 SF TOTAL

Property Features & Benefits

Total 16,000 SF available
Excellent Frontage on Caledonia Road

Highway visibility on back of building.

Fantastic Location in Caledonia Industrial Park!

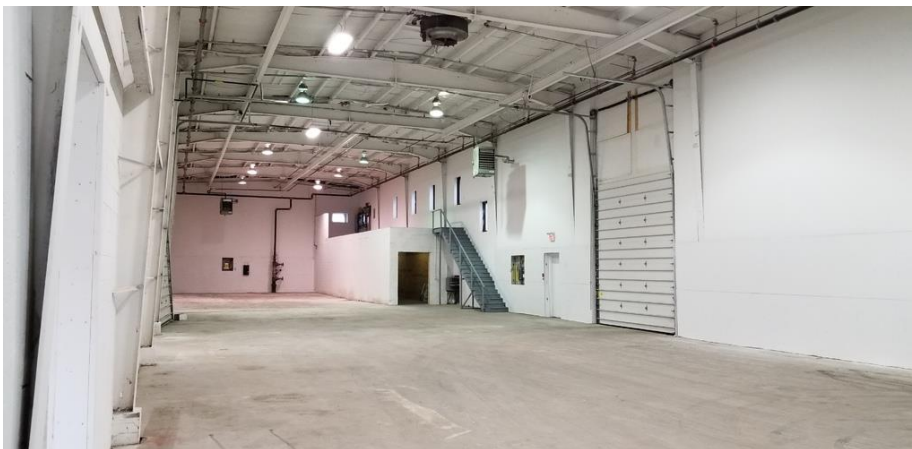
Easy access to the TransCanada Hwy, and just off Elmwood Drive.

Ample Office space readily available

Large semi-paved yard

High Ceilings for great storage capacity
26 ft to 30 ft ceilings

Sprinkler system



Why Choose Us?

- Flexible Leasing Options
- First Rate Customer Service
- Client Consulted Layouts
- Professional & Helpful Staff
- 24-7 Emergency Services
- Locally Owned & Operated
- Bilingual Service



Contact Cathy Sweet

(506) 869-0942

cathy@comztar.com
www.comztar.com



BROKER PROTECTED