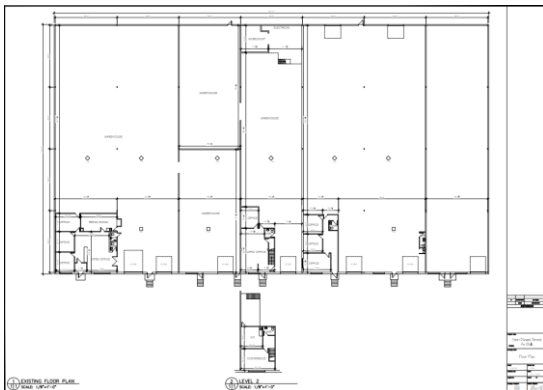
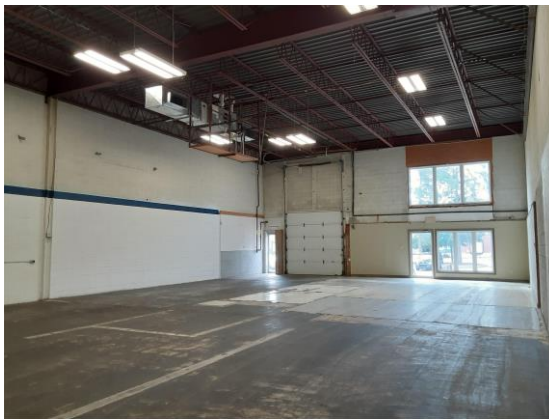




## 159 Henri Dunant, Moncton, NB

Up to 38,800 SF



Up to 38,800 SF available

### Property Features:

- Large warehouse
- Easily subdivided
- 1 Drive in door
- Multiple dock level doors
- Spacious offices
- Washrooms
- Natural gas heat
- Ample parking
- Convenient location off St. George Blvd and close to Wheeler Blvd.

### **Why Choose Us?**

Flexible Leasing Options  
First Rate Customer Service  
Client Consulted Layouts  
Professional & Helpful Staff  
24-7 Emergency Services  
Locally Owned & Operated  
Bilingual Service



Contact Cathy Sweet

506 869 0942

cathy@comztar.com

www.comztar.com

