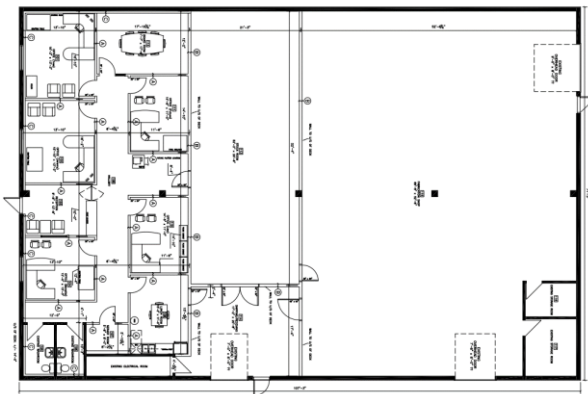


**Need Warehouse Space?
Space for Lease!**
Call Cathy @ 506 869 0942



22 Industrial St., Dieppe, NB



7,776 SF available

Property Features:

- 2 Dock doors
- 1 Drive in door
- Multiple offices
- Appr. 5,300 SF warehouse
- Appr. 2,400 SF offices
- Conference room & lunchroom
- Spacious Yard
- Ample parking
- Great location close to new Hwy15 off ramp
- Great visibility in the Dieppe Industrial Park

Why Choose Us?

Flexible Leasing Options
First Rate Customer Service
Client Consulted Layouts
Professional & Helpful Staff
24-7 Emergency Services
Locally Owned & Operated
Bilingual Service

