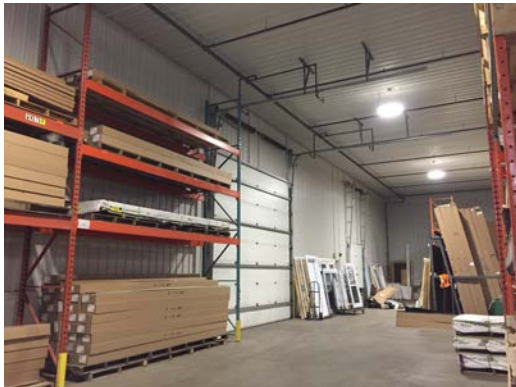




## 215 English Drive, Moncton, NB

Up to 8,000 SF Available



6,000 SF to 8,000 SF available

### Property Features:

- 22 ft ceiling height clear
- In Moncton Industrial Park
- 2 Dock doors
- 1 Drive in door 12x16
- 1 Drive in door 10x10
- Large lot – 2.5 acres
- Show room & Offices
- LED Lighting
- Sprinkler system
- Paved Parking Lot
- Warehouse interior and ceiling finished with steel clad sheeting

**QUALITY BUILDING!**

### **Why Choose Us?**

- Flexible Leasing Options
- First Rate Customer Service
- Client Consulted Layouts
- Professional & Helpful Staff
- 24-7 Emergency Services
- Locally Owned & Operated
- Bilingual Service